

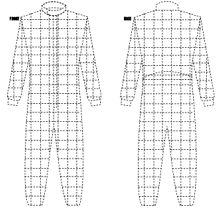
Belt YES NO

Foot Stirrups YES NO

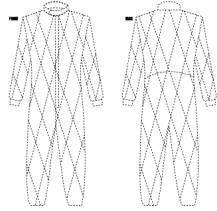
Arm Restraints YES NO

Receiver Pocket YES NO

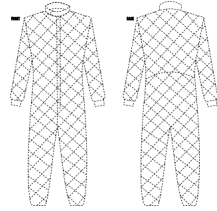
Outer Stitching Style* (choose or Tick your Design)



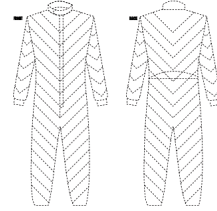
Box Stitch (Standard)



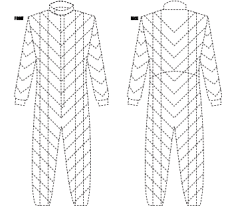
Diamond Stitch



Cross Stitch



V&Angle Stitch



Diagonal Stitch

Collar Style (copy)*



Large w / Velcro



Banded V with Velcro



Tapered V

Choose Collar Style

Leg Cuff*

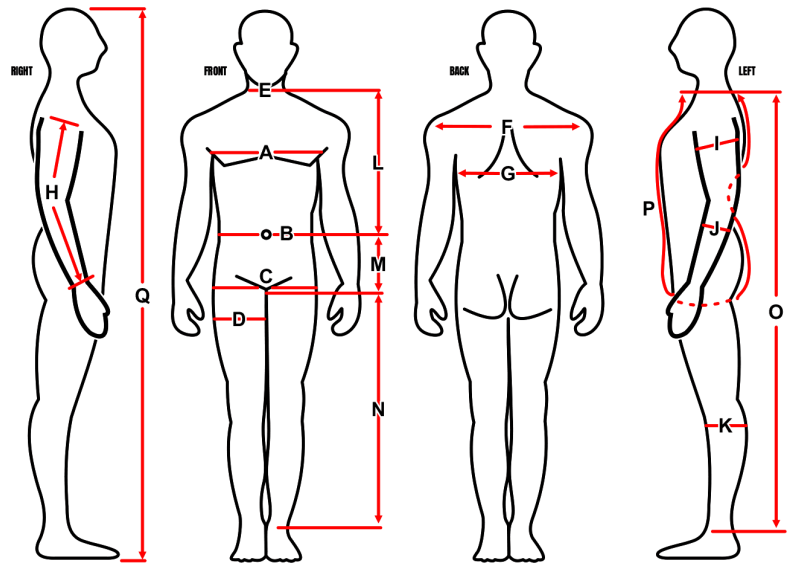


Boot Cut



Euro Cut

Boot Cut (Over the Shoe) - Euro Cut (Into the Shoe)



A. Chest Circumference
(Take deep breath & hold)

B. Waist Circumference
(relaxed belly button height)

C. Hip Circumference Around Buttocks
(widest point)

Thigh Circumference
(widest part)

E. Neck Circumference At Base Of Neck

F. Width Across Top Of Shoulders

G. Width Of Back
(armpit to armpit)

H. Sleeve Length To Wrist
(hand on waist)

Bicep Circumference
(widest part)

J. Forearm Circumference
(widest part)

K. Calf Circumference
(widest part)

L. Length: Base of Neck to Waist (Belly Button)

M. Length: Waist (Belly Button Level) to Crotch

N. Length: Crotch to Ankle

O. Length: Base of Neck to Ankle

P. Saddle Measurement
(Base of neck below adam's apple to base of back of neck)

Q. Total Height

R. Weight